



AXIS
PORTABLE AIR



PORTABLE HEATING

AXISAIR.COM | 888.360.2739



AXIS
PORTABLE AIR



PREMIER® DUCTABLE UNIT HEATERS

FUEL TYPE(S) AVAILABLE: LP & DUAL FUEL

These versatile heaters are great for construction sites*, where low noise or an enclosed flame are important. Premier® heaters can be used to provide heat or simple air circulation inside, or be ducted in from the outside.



Quite
operation



Simple to
read diagnostics



Enclosed flame promotes
safer work environments

PREMIER®	80	80 DF	170	170 DF	350	350 DF
Btu/h Rating	80,000	80,000	170,000	170,000	170,000/350,000	350,000
Heated Air Output (CFM)	450	450	1,200	1,200	2,500	2,500
Fuel Type	LP	LP, NG	LP	LP, NG	LP	LP, NG
Fuel Consumption LP Gas max (lbs./hr.)	3.7	3.7	7.9	7.9	8.1/16.2	16.2
Fuel Consumption Nat. Gas max (cu.ft./hr.)	-	80	-	170	-	350
Two Stage Output	-	-	-	-	YES	-
Amps (starting/continuous operation)	5.0/1.5	5.0/1.5	7.3/5.0	7.3/5.0	25.0/9.0	25.0/9.0
Amps (Standard 15 amp circuit)	YES	YES	YES	YES	YES**	YES**
Motor Horsepower	1/8	1/8	1/3	1/3	1	1
Length (in.)	29.5	29.5	32.6	32.6	48.3	48.3
Width (in.)	13.5	13.5	24.3	24.3	28.0	28.0
Height (in.)	22.0	22.0	32.0	32.0	41.0	41.0
Shipping Weight (lbs.)	79.0	79.0	161.0	161.0	320.0	320.0

Included:



20' Remote
Thermostat



Regulator



Gas Hose

**Amps spike over 15 during initial start-up. Check breaker capability.

- Easy to transport and versatile indoor/outdoor placement
- Direct-fired = 99.97% fuel efficiency
- High volume of air output for maximum heat distribution
- Tri-shield finish for protection against abrasion and corrosion

*Must have adequate ventilation per owner's manual.

- Built-in diagnostic system for safety and ease of troubleshooting
- Dual fuel models allow you to switch fuels easily with a valve turn
- 12' extendable ducting (optional-part #26346 [12"] for 80 & 170 models, and part #22835 [18"] for 350 models)
- CSA certified for U.S. and Canada



MADE IN USA
OF U.S. & IMPORTED PARTS

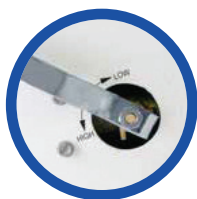




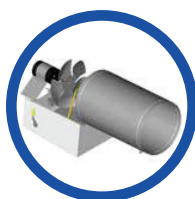
TRADESMAN® FORCED AIR LP/NG HEATERS

FUEL TYPE(S) AVAILABLE: LP, NG, & DUAL FUEL

Engineered to deliver reliable, directional heat, the Tradesman® heaters feature a unique 3-trial ignition system, the industry's heaviest gauge combustion chamber and burner plate, and Self Diagnostic Service Saver models for convenient trouble-shooting.



Variable output control for maximum fuel efficiency



Industry's heaviest gauge combustion chamber and burner plate for longest life



Ultra Models include illuminated diagnostic light for convenient troubleshooting

TRADESMAN®	125	170	170 ULTRA	170N	170N ULTRA	400	400 ULTRA	400 ULTRA DF
Btu/h Rating	70,000-125,000	125,000-170,000	125,000-170,000	125,000-155,000	125,000-155,000	250,000-400,000	250,000-400,000	170,000-400,000
Heated Air Output (CFM)	400	550	550	550	550	1,050	1,050	1,050
Fuel Type	LP	LP	LP	NG	NG	LP	LP	LP/NG
Fuel Consumption LP Gas max (lbs./hr.)	3.3/5.8	5.8/7.8	5.8/7.8	-	-	11.6/18.5	11.6/18.5	11.6/18.5
Fuel Consumption Nat. Gas max (cu.ft./hr.)	-	-	-	125/155	125/155	-	-	250/400
Amps (starting/continuous operation)	2.0/0.70	3.7/2.1	3.7/2.1	3.7/2.1	3.7/2.1	4.0/1.5	4.0/1.5	4.0/1.5
Service Saver (Self-diagnostics)	-	-	YES	-	YES	-	YES	YES
Length (in.)	25.6	24.0	24.0	24.0	24.0	34.5	34.5	34.5
Width (in.)	11.8	9.5	9.5	9.5	9.5	12.5	12.5	12.5
Height (in.)	16.0	16.0	16.0	16.0	16.0	21.5	21.5	21.5
Shipping Weight (lbs.)	28.0	34.0	34.0	34.0	34.0	51.0	51.0	55.0

*250,000 - 400,000 BTU/H on LP.

- Thermostatic temperature control (170 and 400 models)
- Variable heat output promotes fuel savings
- Dependable electronic spark ignition
- Tri-Shield finish protects against abrasion and corrosion.
- Adjustable front leg to direct heat (125 and 170 model)
- CSA certified for US and Canada (400 Ultra DF CSA cert. US only)



MADE IN USA
OF U.S. & IMPORTED PARTS





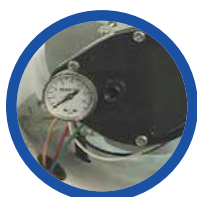
TRADESMAN® K FORCED AIR HEATERS

FUEL TYPE(S) AVAILABLE: KEROSENE*

Provides instant, directional heat when using gas is not convenient, or a self-contained fuel source is desired. A dependable dual-prong electronic spark ignition, heavy duty enclosed motor, and long lasting composite fuel fittings are just a few of the features that provide a long life.



Auxiliary 110V power receptacle
(125K thru 400K)



Includes pressure gauge for easy
serviceability (K75 thru K210)



Temperature display and
thermostat control fuel usage

TRADESMAN®	K75	K125	K175	K210	K400	K650
Btu/h Rating	75,000	125,000	175,000	210,000	400,000	650,000
Heated Air Output (CFM)	265	520	600	650	1,400	3,600
Fuel Type	KEROSENE*	KEROSENE*	KEROSENE*	KEROSENE*	KEROSENE*	KEROSENE*
Fuel Consumption max. (gal./hr.)	0.6	0.95	1.3	1.6	3.0	4.9
Tank Capacity	5	10	13	13	29	50
Operating Time max. (hrs.)	8.3	10.5	10.0	8.0	9.5	10.0
Amps (continuous operation)	1.6	2.5	3.2	3.7	4.4	7.1
Pump Pressure (PSI)	3.8	5.5	6.5	8.5	125	110
Motor Horsepower	1/8	1/5	1/4	1/3	1/2	3/4
Length (in.)	32	36.1	41.8	41.8	52.5	69.2
Width (in.)	11.8	21.5	23.1	23.1	31.4	32.8
Height (in.)	16.8	24.6	26.1	26.1	32.8	48.7
Shipping Weight (lbs.)	30.0	63.7	71.6	73.2	163.0	298.0

- Dependable dual-prong electronic spark ignition
- Comfort control thermostat
- Built in air diagnostic system for troubleshooting ease
- Fuel gauge indicates remaining run time

- Durable composite fuel fittings for max life
- Threaded drain plug
- Wheels and handles for maneuvering (K125 and up)
- CSA certified for U.S. and Canada

*Kerosene, #1 and #2 Diesel or #1 fuel oil.





FOREMAN® INDIRECT-FIRED HEATERS

FUEL TYPE(S) AVAILABLE: DUAL FUEL & DIESEL

The vented Foreman® heater is ideal for providing dry, clean, heat into insulated spaces, work areas, warehouses or anywhere clean air is needed. L.B. White's Foreman® heater features an air recirculating option, choice of dual or single air output with optional ducting, and easy diagnostics.



Switch between LPG
and NG with push lever
on DF unit



Two 12" ducts
standard or one 16"
duct sold separately



Air recirculation
option; just add
20" duct



Separate diagnostics
for burner and
heater system



Farm duty
motor

FOREMAN®	230 DF	230 OIL	500 DF	500 OIL	750 DF	750 OIL
Btu/h Rating	230,000	230,000	500,000	500,000	750,000	750,000
Fuel Type	LP,NG	#1 OR #2 DIESEL	LP,NG	DIESEL	LP,NG	DIESEL
Fuel Consumption LP Gas max (lbs./hr.)	10.6	-	23.0	-	34.5	-
Fuel Consumption Nat. Gas max (cu.ft./hr.)	230.0	-	500.0	-	750.0	-
Fuel Consumption Diesel 1 or 2 Max. (gal./hr.)	-	1.7	-	3.6	-	5.4
Tank Size/Operating Time	-	33	-	42 GAL/11HRS	-	42 GAL/8HRS
Easy External Tank Hookup	-	-	-	-	-	-
Blower Fan Output (CFM)	1,900	1,900	3,457	3,457	4,280	4,280
Amps (starting/continuous operation)	-	-	32.2/13.5	32.2/13.5	38.0/12.0	38.0/12.0
Motor Horsepower	0.5	0.5	1.5	1.5	2.0	2.0
Length (in.)	60.2	60.2	94.0	94.0	94.0	94.0
Width (in.)	26.6	26.6	32.0	32.0	32.0	32.0
Height (in.)	43.3	43.3	53.0	53.0	53.0	53.0
Shipping Weight (lbs.)	421.0	516.0	850.0	1000.0	865.0	1021.0

Included:



Thermostat
(#30125)



Chimney, Raincap
(Foreman 500s & 750 DF:
#30161, #30162 Foreman 750
Oil: #30161A, #30162A)



16" Duct Adapter
(#30902)



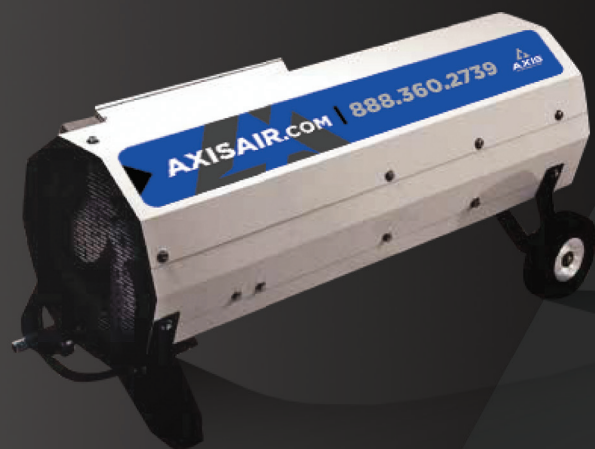
Stacking Kit
(#30903)

- Easy to transport (single point lifting bale and bottom fork pockets for easy maneuverability)
- Quiet burn with high CFM
- Can accommodate up to 100' of ducting
- Remote thermostatic control available
- Rugged, urethane wheels don't go flat, yet absorb bumps like pneumatic tires
- O-T L certified for U.S. and Canada



MADE IN USA
OF U.S. & IMPORTED PARTS





BOSS™ DIRECT-FIRED HEATERS

FUEL TYPE(S) AVAILABLE: DUAL FUEL

Boss™ heaters combine 99% fuel efficiency with the ability to distribute heat into large construction or industrial spaces. Loaded with features that benefit owner and operator, these direct-fired heaters are engineered to be job site tough and work as hard as you do.



QuickSwitch™
Dual Fuel



Control panel featuring easy ignition,
volt meter, and diagnostic light



Vent mode
moves air like a fan

BOSS™	400 DF	1000 DF
Btu/h Rating	400,000	1,000,000
Fuel Type	LP,NG	LP,NG
Ignition type	SPARK	SPARK
Fuel Consumption LP Gas max (lbs./hr.)	18.5	46.3
Fuel Consumption Nat. Gas max (cu.ft./hr.)	400	1,000
Blower Fan Output (CFM)	2,500	5,000
Inlet Gas Pressure LP min./max. (in w.c.)	7/13.5	7/13.5
Inlet gas pressure ng min./max. (in w.c.)	7/13.5	7/13.5
Amps (starting/continuous operation)	27.2/7.1	23.2/8.4
Electric supply (volts/hz/phase)	120/60/1	120/60/1
Motor Horsepower	1/2 HP	1 HP
Length (in.)	50	65
Width (in.)	21.25	31
Height (in.)	22.5	33.25
Unit Weight (lbs.)	125.0	300.0



Stackable



10-sided case for easy
inside-out access

- No parts or downtime to change fuel, confirm onsite voltage, or manage heat output
- Truly portable with handle, no-flat wheels, and standard door fit
- Indoor/outdoor rated and rust resistant
- O-T L certified for U.S. and Canada



MADE IN USA
OF U.S. & IMPORTED PARTS

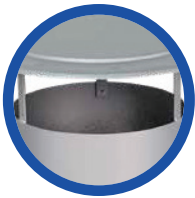




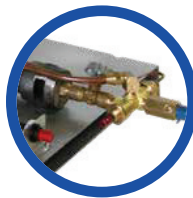
NORSEMAN™ CONVECTION HEATERS

FUEL TYPE(S) AVAILABLE: LP

These heavy duty convection heaters feature cast iron burners and heavy gauge steel bodies. Norseman™ heaters are ideal for rental or frequent usage on construction sites, or anytime electricity is not available.



Heaviest gauge steel body
available in a convection heater



Adjustable shut-off
that saves fuel



No electricity
required

NORSEMAN™	200 PLUS	250
Btu/h Rating	200,000	250,000
Fuel Type	LP	LP
Fuel Consumption LP Gas max (lbs./hr.)	9.3	11.6
Ignition type	PIEZO/PILOT	PILOT
Length (in.)	18.0	18.0
Width (in.)	13.0	13.0
Height (in.)	24.0	24.0
Shipping Weight (lbs.)	34.0	34.0

- Ideal for heavy industrial and rental use
- Direct-fired = 99.97% fuel efficiency
- 360° heat output
(200 Plus and 250 models)
- Heavy duty, one piece barrel
- Unique top design provides superior distribution of heat
- - CSA certified for U.S. and Canada
(Norseman 200 Plus Only)



MADE IN USA
OF U.S. & IMPORTED PARTS





WORKMAN™ CONVECTION HEATERS

FUEL TYPE(S) AVAILABLE: LP & NG

These standard duty convection heaters feature adjustable output control to save fuel, and a unique top design for superior heat distribution. Workman™ heaters provide 360° heating and don't require electricity.



Adjustable output control for maximum fuel efficiency



Unique top design provides superior distribution of heat



No electricity required

WORKMAN™	100N PLUS	250 PLUS
Btu/h Rating	100,000	45,000-225,000
Fuel Type	NG	LP
Fuel Consumption LP Gas max (lbs./hr.)	-	2.4/10.4
Fuel Consumption Nat. Gas Max. (cu.ft./Hr.)	100	-
Ignition type	PIEZO/PILOT	PIEZO
Length (in.)	14.0	16.5
Width (in.)	12.0	15.0
Height (in.)	20.0	26.0
Shipping Weight (lbs.)	14.0	19.0

- Lightweight for easy maneuverability
- Variable heat (225 Plus)
- Direct-fired = 99.97% fuel efficiency
- Enclosed stainless steel burner provides superior wind resistance
- 360° heat output
- One piece barrel for strength & durability
- No assembly required
- CSA certified for U.S. and Canada



MADE IN USA
OF U.S. & IMPORTED PARTS





SUN BLAST® FLAT PANEL RADIANT HEATER

FUEL TYPE(S) AVAILABLE: LP

This flat panel radiant is great for spot heating large areas using its tall profile. Easy to move around with its high handle and wheels, this Sun Blast® radiant heater has quiet operation. Radiant heaters heat like the sun, heating objects not the air.



Directional heat with
large foot print



Folding handle and wheels
for easy transport



No electricity
required

SUN BLAST®	35
Btu/h Rating	35,000
Fuel Type	LP
Fuel Consumption LP Gas max (lbs./hr.)	1.6
Operating Time (20 lb LP cylinder)	12.5 HRS.
Ignition type	PIEZO
Length (in.)	12.4
Width (in.)	10.4
Height (in.)	37.5
Shipping Weight (lbs.)	30.0

- Lightweight for easy maneuverability
- Piezo ignition
- Direct-fired = 99.97% fuel efficiency
- Tip over switch shuts product down for safety
- Works with standard 20 lb. cylinder
- ETL certified for U.S. and Canada

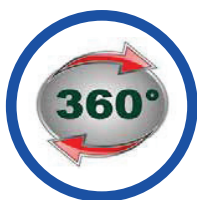




SUN BLAST® ROUND RADIANT HEATERS

FUEL TYPE(S) AVAILABLE: LP & NG

Provides 360° radiant heating and doesn't require electricity. Their rugged construction makes them durable for any construction site. Radiant heaters heat like the sun, heating objects not the air.



360°
heat output



High handle and wheels
for easy transport



No electricity
required

SUN BLAST®	125	125N
Btu/h Rating	125,000	125,000
Fuel Type	LP	NG
Fuel Consumption LP Gas max (lbs./hr.)	5.8	-
Fuel Consumption Natural Gas max. (cu.ft./hr.)	-	125
Ignition type	PIEZO/PILOT	PIEZO/PILOT
Length (in.)	16.5	16.5
Width (in.)	16.2	16.2
Height (in.)	35.0	35.0
Shipping Weight (lbs.)	43.0	43.5

- Lightweight for easy maneuverability
- Piezo pilot ignition
- Improved design over competitive models prevents carbon build-up for longer run time
- Direct-fired = 99.97% fuel efficiency
- Tip over switch shuts product down for safety
- High temperature paint
- ETL certified for U.S. and Canada





SUN BLAST® TANK TOP RADIANT HEATERS

FUEL TYPE(S) AVAILABLE: LP

Tank top heaters easily fit on your standard 20 lb. LP tank and provide great spot heat. Radiant heaters heat like the sun, heating objects not the air. Units are available in single or double head models and don't require electricity.



Tip over
safety switch



Hand-wheel to reduce
connection time

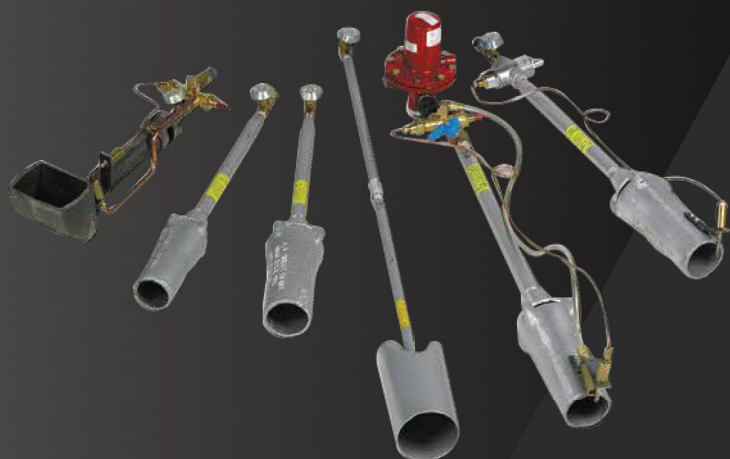


No electricity
required

SUN BLAST®	15	30
Btu/h Rating	9,000/15,000	9,000/30,000
Fuel Type	LP	LP
Valve Output Settings	LOW/MED/HIGH	LOW/MED/HIGH
Operating Time (20 lb LP cylinder)	46 HRS/28 HRS	46 HRS/14 HRS
Ignition type	MANUAL	MANUAL
Length (in.)	8.3	6.5
Width (in.)	7.1	17.3
Height (in.)	12.0	15.5
Shipping Weight (lbs.)	3.5	6.0

- CSA certified high wind resistant burner
- Variable BTU output
- Front and back protective grill
- Shuts off with loss of flame
- Fit on your standard 20 lb. LP cylinder
- Manual ignition
- No electricity required
- Direct-fired = 99.97% fuel efficiency
- Quick connect P.O.L. tank connection
- CSA certified for U.S. and Canada





HANDHELD TORCHES

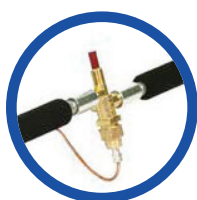
TORCHMAN™, BERTHA™, & INDUSTRIAL

FUEL TYPE(S) AVAILABLE: LP & NG

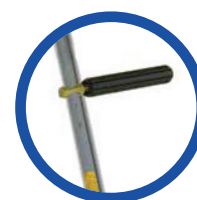
Designed for a variety of applications, L.B. White heavy duty torches meet some of the industry's toughest specs. Ideal for thawing pipes, burning brush, roofing, and more.



Cast iron burner on Bertha & Industrial models



Shut-off safety valve on Torchman SV, Industrial 250, & Industrial 365N models



Extra handle (part #25791) for maneuverability available on Torchman units

TORCHES	TORCHMAN™ SV	TORCHMAN™ 500	BERTHA™ 500	INDUSTRIAL 250	INDUSTRIAL 365N
Btu/h Rating	300,000	500,000	500,000	250,000	365,000
Fuel Type	LP	LP	LP	LP	NG
Ignition type	MANUAL	MANUAL	MANUAL	PILOT	PILOT
Fuel Consumption LP Gas max. (lbs./hr.)	14.0	23.2	23.2	11.3	-
Fuel Consumption Natural Gas max. (cu.ft./hr.)	-	-	-	-	365.5
Head Type	STEEL	STEEL	CAST IRON	CAST IRON 90° HEAD	CAST IRON
Assembled Length (in.)	29.5	36.0	22.0	17.5	26.0
Shipping Weight (lbs.)	5.2	4.2	7.0	7.5	10.5

- Lightweight steel and heavy duty cast iron models
- Manual or pilot light
- Assembled handle lengths from 17.5 to 41"
- No regulator needed for Torchman™ models
- Can use year round
- Ships in economical quantities of 4 or 8
- ETL certified for Canada (Torchman™ SV and 500 only)



MADE IN USA
OF U.S. & IMPORTED PARTS



ACCESSORIES

THERMOSTATS	FITS MODELS	DESCRIPTION	PART #
	Premier® 80, 17018	Nema 4x thermostat with 20' cord	09454
	Premier® 350	Nema 4x 2-stage thermostat with 25' cord	22920
	Foreman® 500, 750	Nema 4x thermostat with 25' cord	30125
REGULATORS	FITS MODELS	DESCRIPTION	PART #
	Premier® 80 LP	Propane regulator with hand wheel connector	26377
	Premier® 170 LP	Propane regulator with hand wheel connector	26419
	Premier® 350 LP	Propane regulator with hand wheel connector	22916
	Premier® 80 N, 170 N	Natural gas regulator	09795
	Premier® 170 DF	Duel-Fuel Regulator (propane & natural gas)	26423
	Premier® 80, 170	Ventless Regulator	28690
	Premier® 350	Ventless Regulator	28691
	Premier® 350, 350 DF, Foreman® 500 DF	Duel-fuel regulator (propane & natural gas)	25141
	Torches	Propane Regulator	21788
GAS HOSE	FITS MODELS	DESCRIPTION	PART #
	Universal	1/2" x 15' Universal gas hose kit c/w 5 adapters	24600
	Universal	1/2" x 20' Universal gas hose kit c/w 5 adapters	25960
	Universal	1/2" x 25' Universal gas hose kit c/w 5 adapters	25961
	Premier® 350	3/4" x 15' gas hose	25965
DUCTING	FITS MODELS	DESCRIPTION	PART #
	Premier® 80, 170	12" x 12' gray duct kit (incl. adapter ring)	26346
	Premier® 80, 170	12" x 12' white duct kit (incl. adapter ring)	26347
	Premier® 80, 170	12" x 12' light duty duct kit (incl. adapter ring)	06348
	Premier® 350	18" x 12' gray duct kit (incl. adapter ring)	22835
	Premier® 350	18" x 12' light duty duct kit (incl. adapter ring)	24442
	Foreman® 500, 750	12" x 25' gray duct kit (incl. adapter ring)	30052
	Foreman® 500, 750	20" x 25' gray duct recirculating kit (incl. clamp)	30053
	Foreman® 500, 750	16" x 25' gray duct kit (incl. clamp)	30076
MISC.	FITS MODELS	DESCRIPTION	PART #
	Foreman® 500, 750 DF	Exhaust pipe Extension, steel	30161
	Foreman® 750 Oil	Exhaust pipe Extension, steel	30161A
	Foreman® 500, 750 DF	Rain Cap	30162
	Foreman® 750 Oil	Rain Cap	30162A
	Foreman® 500, 750 DF	Stacking Kit	30903
	Foreman® 500, 750	16" adapter kit	30902
	Torches	Pol Stem	571701
	Torchman 500	Torch handle, sliding	25791

*For a complete listing of all accessories please see our Parts and Accessories Price List





FIT TO YOUR JOB SITE

WHAT BTU/H IS NEEDED TO HEAT A GIVEN AREA?

1. Multiply room length x width x height to determine total cubic feet.
2. Locate desired rise in temperature.

Example: Room is 10°C / 50°F, desired temperature is 21°C / 70°F = 11°C / 20°F rise in temperature

3. Read Btu/h

CUBIC FEET	RISE IN TEMPERATURE							
	6°C / 10°F	11°C / 20°F	17°C / 30°F	22°C / 40°F	28°C / 50°F	33°C / 60°F	39°C / 70°F	44°C / 80°F
4,000	5,320	10,640	15,960	21,280	26,600	31,920	37,240	42,560
8,000	10,640	21,280	31,920	42,560	53,200	63,840	74,480	85,120
12,000	15,960	31,920	47,880	63,840	79,800	95,760	111,720	127,680
16,000	21,280	42,560	63,840	85,120	106,400	127,680	148,960	170,240
20,000	26,600	53,200	79,800	106,400	133,000	159,600	186,200	212,800
24,000	31,920	63,840	95,760	127,680	159,600	191,520	223,440	255,360
28,000	37,240	74,480	111,720	148,960	186,200	223,440	260,680	297,920
32,000	42,560	85,120	127,680	170,240	212,800	255,360	297,920	340,480
36,000	47,880	95,760	143,640	191,520	239,400	287,280	335,160	383,040
40,000	53,200	106,400	159,600	212,800	266,000	319,200	372,400	425,600
44,000	58,520	117,040	175,560	234,080	292,600	351,120	409,640	468,160
48,000	63,840	127,680	191,520	255,360	319,200	383,040	446,880	510,720
52,000	69,160	138,320	207,480	276,640	345,800	414,960	484,120	553,280
56,000	74,480	148,960	223,440	297,920	372,400	446,880	521,360	595,840
60,000	79,800	159,600	239,400	319,200	399,000	478,800	558,600	638,400
64,000	85,120	170,240	255,360	340,480	425,600	510,720	595,840	680,960
68,000	90,440	180,880	271,320	361,760	452,200	542,640	633,080	723,520
72,000	95,760	191,520	287,280	383,040	478,800	574,560	670,320	766,080
76,000	101,080	202,160	303,240	404,320	505,400	606,480	707,560	808,640
80,000	106,400	212,800	319,200	425,600	532,000	638,400	744,800	851,200
84,000	111,720	223,440	335,160	446,880	558,600	670,320	782,040	893,760
88,000	117,040	234,080	351,120	468,160	585,200	702,240	819,280	936,320
92,000	122,360	244,720	367,080	489,440	611,800	734,160	856,520	978,880
96,000	127,680	255,360	383,040	510,720	638,400	766,080	893,760	1,021,440
100,000	133,000	266,000	399,000	532,000	665,000	798,000	931,000	1,064,000
104,000	138,320	276,640	414,960	553,280	691,600	829,920	968,240	1,106,560
108,000	143,640	287,280	430,920	574,560	718,200	861,840	1,106,480	1,149,120
112,000	148,960	297,920	446,880	595,840	744,800	893,760	1,042,720	1,191,680
116,000	154,280	308,560	462,840	617,120	771,400	925,680	1,079,960	1,234,240
120,000	159,600	319,200	478,800	638,400	798,000	957,600	1,117,200	1,276,800

The number of Btu/h may vary from the chart due to building configurations, materials, and weather variables.

WHAT SIZE GAS SUPPLY IS NEEDED FOR MY HEATER?



HEATERS UP TO 250,000 BTU/H:

Average Temp (°F) 50° 40° 30° 20° 10° -10°

Number of 100 LB. Gas Cylinders 2 2 3 3 3 3

CYLINDERS MUST BE MANIPULATED TOGETHER TO ALLOW SIMULTANEOUS VAPOR WITHDRAWAL FROM ALL CYLINDERS.



HEATERS GREATER THAN 250,000 BTU/H:

500 gallon tank - 1 heater per tank

1000 gallon tank - 2 heaters per tank

(100LB. OF PROPANE = 23.6 GAL [100/4.24])

